

EXTERIOR MATERIALS AT ENTRANCE

ANODIZED ALUMINUM FASCIA

E.I.F.S.

STONE VENEER

TYPICAL EXTERIOR MATERIALS

ANODIZED ALUMINUM FASCIA

E.I.F.S. CORNICE TRIM

FACE BRICK 'A'

WALL LIGHT

STONE ACCENT BANDS

ALUMINUM FRAMED WINDOWS

CUT STONE SILL

BURNISHED BLOCK

TOTAL WALL AREA = 3,696 SQ. FT. X 5%
 TOTAL SIGNAGE ALLOWED 185 SQ. FT.
 TOTAL SIGNAGE SHOWN 185 SQ. FT.



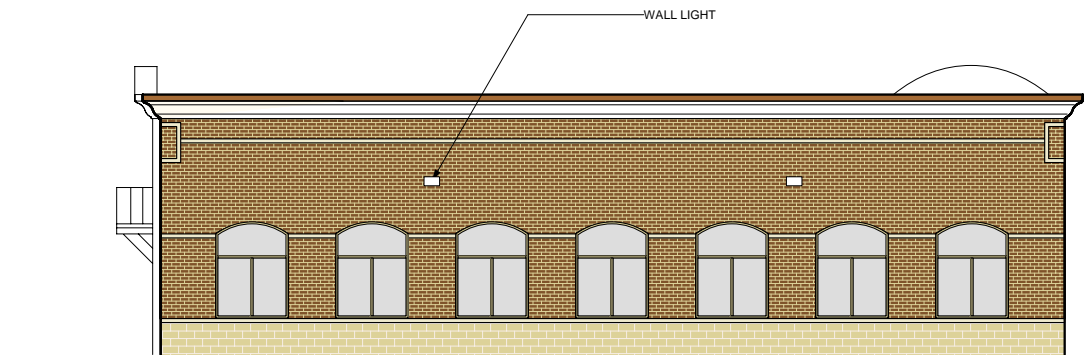
1 NORTH ELEVATION
 A3 SCALE: 1/8" = 1'-0" ON 24X36
 1/16" = 1'-0" ON 11X17



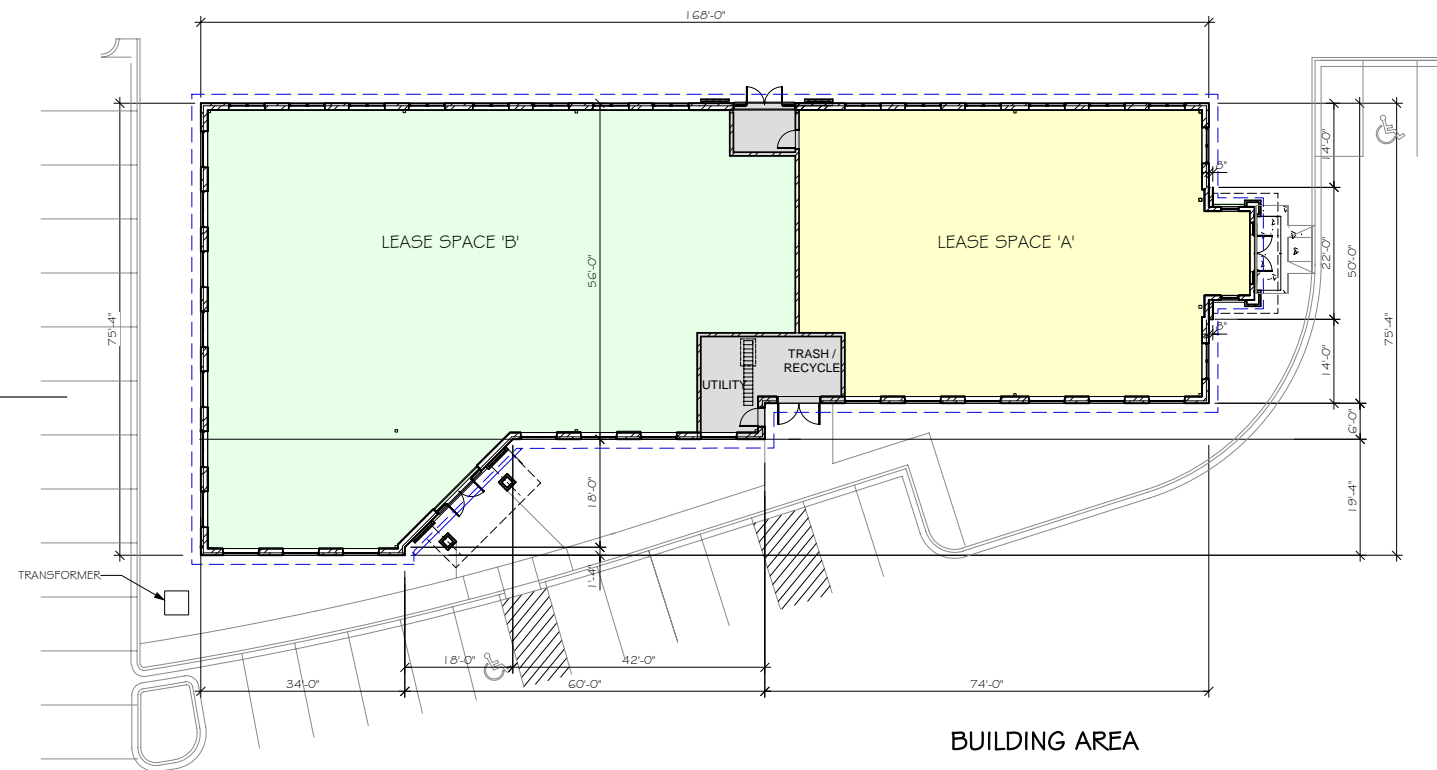
2 SOUTH ELEVATION
 A3 SCALE: 1/8" = 1'-0" ON 24X36
 1/16" = 1'-0" ON 11X17



2 EAST ELEVATION
 A3 SCALE: 1/8" = 1'-0" ON 24X36
 1/16" = 1'-0" ON 11X17



3 WEST ELEVATION
 A3 SCALE: 1/8" = 1'-0" ON 24X36
 1/16" = 1'-0" ON 11X17



BUILDING AREA

BUILDING GROSS	9,990 SQ. FT.
LEASE SPACE 'A' (USABLE)	3,311 SQ. FT.
LEASE SPACE 'B' (USABLE)	5,781 SQ. FT.
BUILDING COMMON	458 SQ. FT.

1 FLOOR PLAN
 A2 SCALE: 1/16" = 1'-0" ON 24X36
 1/32" = 1'-0" ON 11X17

PLAN NORTH

10600 BUILDING
 10600 OLD COUNTY ROAD 15
 PLYMOUTH, MINNESOTA

Quest Development, Inc.
 10700 Old County Road 15
 Plymouth, MN 55441
 Tel: 763-595-9511
 Fax: 763-595-9512

PAUL MEYER
 ARCHITECTS, INC.
 15650 36TH AVE. #170
 PLYMOUTH, MN 55446
 763-557-9081
 763-557-9233

**PRELIMINARY
 NOT FOR
 CONSTRUCTION**

ISSUE/REVISIONS
 10-12-07 DESIGN UPDATE

**ELEVATIONS
 FLOOR PLAN**
A1